

56K V.92/V.44 PCI soft Modem

User's Manual

TABLE OF CONTENT

1. Contents of Package	2
2. Comprehensive Modem Installation Instructions	2
2.1 Modem Installation	2
2.2 Hardware Installation	2
2.3 System Setup.....	4
2.3.1 Setup Instructions for Windows 98	4
2.3.2 Uninstall Modem from Windows 98	5
2.3.3 Setup Instructions for Windows Me	6
2.3.4 Uninstall Modem from Windows Me	7
2.3.5 Setup Instructions for Windows NT4.0	8
2.3.6 Uninstall Modem from Windows NT4.0	9
2.3.7 Setup Instructions for Windows 2000	10
2.3.8 Uninstall Modem from Windows 2000	12
2.3.9 Setup Instructions for Windows XP	13
2.3.10 Uninstall Modem from Windows XP	15
2.4 Testing your modem.....	16
2.5 Install Communication Software.....	16
3. Troubleshooting.....	17
Appendix 1: Modem Specifications.....	19
Appendix 2: AT Command Set	20
Appendix 3: S-Register Summary	25
Appendix 4: Result Codes Summary.....	28
Appendix 5: Government Compliance.....	30

Section 1 Contents of Package

- One V.92/V.44 PCI bus window software modem
- One telephone cable
- One CD-ROM disk comprises Communication software, Modem Driver & User's Manual
- Quick installation guide

Please contact the place of purchase if any of the above listed items are missing.

Section 2 Comprehensive Modem Installation Instructions

Section 2.1 Modem Installation

This section will provide instructions for the installation of your modem. There are hardware installation and system setup two parts for the modem. The modem hardware must be installed into the computer correctly before you start the system setup.

Section 2.2 Hardware Installation

Please refer to Fig. 2 - 1 and proceed to following steps for how to insert your modem into the computer and connect telephone wire and audio accessories.

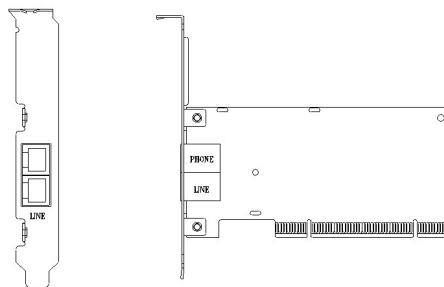


Figure 2-1 Internal modem diagram

1. Turn off and unplug your computer from the AC outlet.
2. Unplug any peripheral devices (keyboard, monitor, etc.) from your computer to avoid the risk of electric shock.
3. Take the cover off your computer, review computer's manual if you need further instructions.
4. Find an empty PCI slot.

V.92/V.44 PCI MODEM USER'S MANUAL

5. Unscrew the PCI slot bracket and save the screw, then remove the bracket.
6. Plug the modem into the PCI slot carefully until the modem is properly seated.
7. Fasten the modem bracket firmly with the screw saved in step 5.
8. Reassemble your computer cover and re-plug cables for peripheral.
9. Plug one end of telephone cord into the "**LINE**" jack at the modem's bracket. Plug another end of the telephone cord into the telephone wall jack
10. Some models may comprise a phone jack for an optional telephone. If you wish to use a phone through the same telephone wall jack when the modem is not in use, plug the telephone cord of the phone into "**PHONE**" jack at the modem's bracket now. Lift the handset and listen for a dial tone to check for a properly connection.
11. Plug the power cord into the computer and turn the computer on.
12. Up to now, the hardware installation had been finished. If you have not encountered any problems, you can go to **Section 2.3 System Setup**. If you are having problems, see **Section 3 Troubleshooting**.

NOTE: The telephone wall jack you use must be for an ANALOG phone line (the type found in most homes). Many offices are equipped with digital phone lines. Please be sure you know which type of line you have. The modem will be damaged if you use a digital phone line.

Section 2.3 System Setup

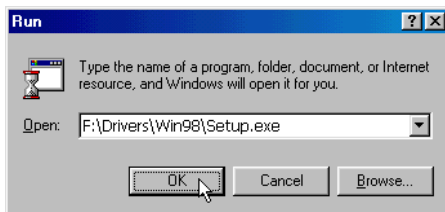
Section 2.3.1 Setup instructions for Windows 98

STEP 1. After you complete the modem hardware installation and turn on your PC, Windows system will automatically detect your new added devices. Windows system will prompt you with an Add New Hardware Wizard.



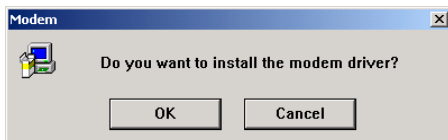
Then click on **Cancel**.

STEP 2. Insert the **Modem Driver** CD-ROM disk attached with your modem into the CD-ROM drive device, Then run **<CD-ROM letter>:\drivers\Win98\Setup.exe** as shown in figure.



Then click on **OK**

STEP 3. And then, a prompt screen will ask you to ensure to install the modem driver.



Then click **OK**.

The setup utility will copy the needed files into windows system.

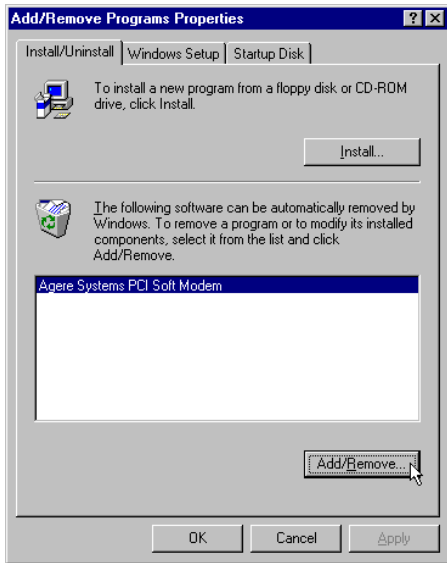
STEP 4. If there is no error message while the system is installing, your modem has been set up properly and functionally.

Section 2.3.2 Uninstall Modem from Windows 98

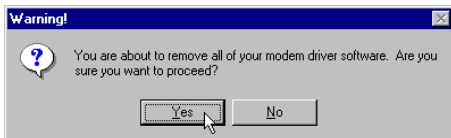
STEP 1. Open **Control Panel** window, then click **Add/Remove Programs** icon.



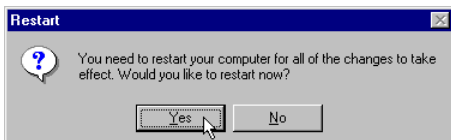
STEP 2. Choose **Agere Systems PCI Soft Modem** device in **stall/Uninstall** tab, then click on **Add/Remove...**



STEP 3. Click **Yes** to ensure to remove **Agere Systems PCI Soft Modem** device and its drivers.



STEP 4. Click **Yes** to restart your computer for all of the changes to take effect.



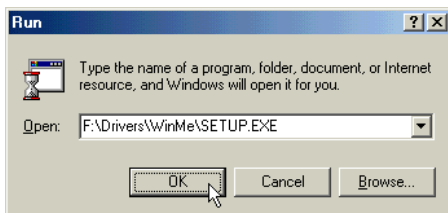
Section 2.3.3 Setup instructions for Windows Me

STEP 1. After you complete the modem hardware installation and turn on your PC, Windows system will automatically detect and install your new added devices. Windows system will prompt you with an Add New Hardware Wizard.



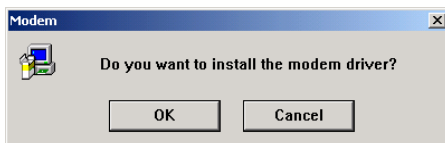
Click on **Cancel**.

STEP 2. Insert the **Modem Driver** CD-ROM disk attached with your modem into the CD-ROM drive device, then run **<CD-ROM letter>:\drivers\WinMe\SETUP.EXE** to upgrade the modem driver as shown in figure.



Then click on **OK**.

STEP 3. And then, a prompt screen will ask you to ensure to install the modem driver.



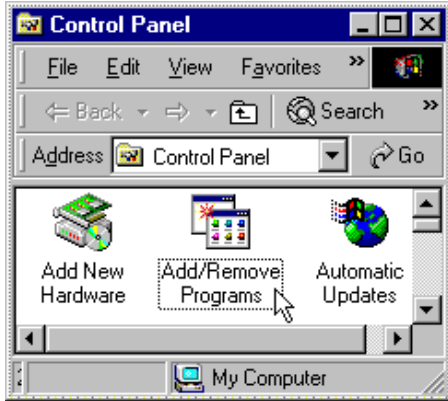
Then click **OK**.

The setup utility will copy the needed files into windows system.

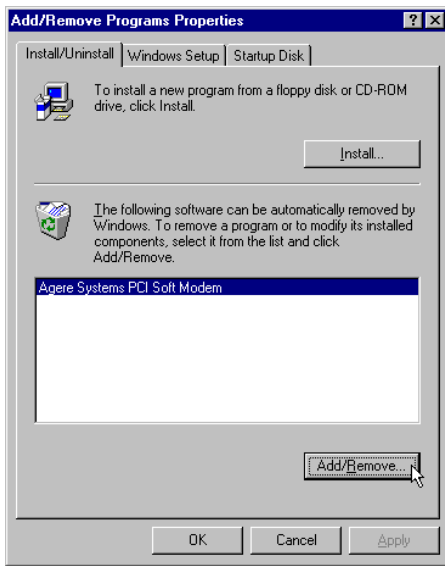
STEP 4. If there is no error message while the system is installing, your modem has been set up properly and functionally.

Section 2.3.4 Uninstall Modem from Windows Me

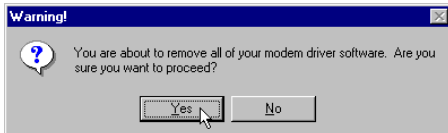
STEP 1. Open **Control Panel** window, then click on **Add/Remove Programs** icon.



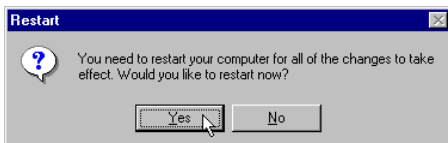
STEP 2. Choose **Agere Systems PCI Soft Modem** device in **Install/Uninstall** tab, then click on **Add/Remove...**



STEP 3. Click **Yes** to ensure to remove **Agere Systems PCI Soft Modem** device and its drivers.

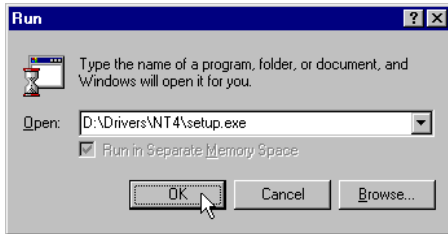


STEP 4. Click **Yes** to restart your computer for all of the changes to take effect.

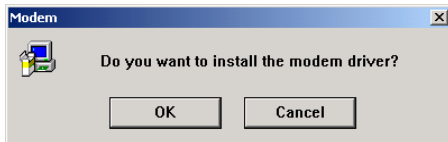


Section 2.3.5 Setup instructions for Windows NT4.0

STEP 1. Insert the **Modem Driver** CD-ROM disk attached with your modem into the CD-ROM drive device, Then run **<CD-ROM letter>:\Drivers\ NT4\Setup.exe** as shown in figure.



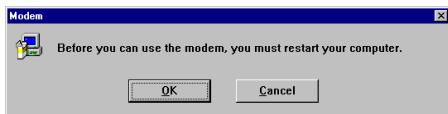
STEP 2. And then, a prompt screen will ask you to ensure to install the modem driver.



Then click **OK**.

The setup utility will copy the needed files into windows system.

STEP 3. The prompt screen will ask you to restart to enable the modem driver.



Then click on **OK**.

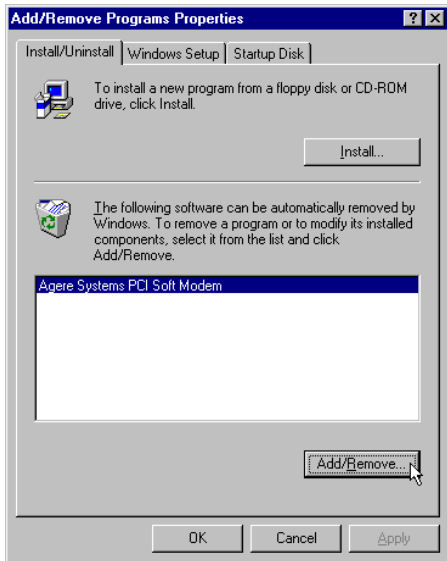
STEP 4. The system will restart your system. If there is no error message while the system is re-booting, your modem has been set up properly and functionally.

Section 2.3.6 Uninstall Modem from Windows NT4.0

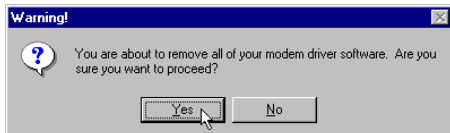
STEP 1. Open **Control Panel** window, then click **Add/Remove Programs** icon.



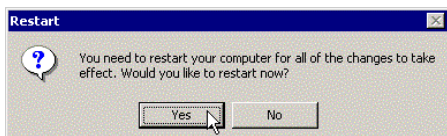
STEP 2. Choose **Agere Systems PCI Soft Modem** device in **stall/Uninstall** tab, then click on **Add/Remove...**



STEP 3. Click **Yes** to ensure to remove **Agere Systems PCI Soft Modem** device and its drivers.



STEP 4. Click **Yes** to restart your computer for all of the changes to take effect.



Section 2.3.7 Setup instructions for Windows 2000

STEP 1. After you complete the modem hardware installation and turn on your PC, Windows system will automatically detect your new added devices. Windows system will prompt you with an Add New Hardware Wizard.



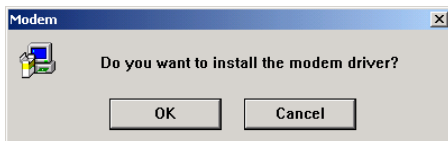
Click on **Cancel**.

STEP 2. Insert the **Modem Driver** CD-ROM disk attached with your modem into the CD-ROM drive device, then run **<CD-ROM letter>:\drivers\Win2K&XP\Setup.exe** as shown in figure.



Then click on **OK**.

STEP 3. And then, a prompt screen will ask you to ensure to install the modem driver.



Then click on **OK**.

The setup utility will copy the needed files into windows system.

STEP 4. The prompt screens will be warning you that the digital signature of programs have not found as shown in figure.



Please always click on **Yes**.

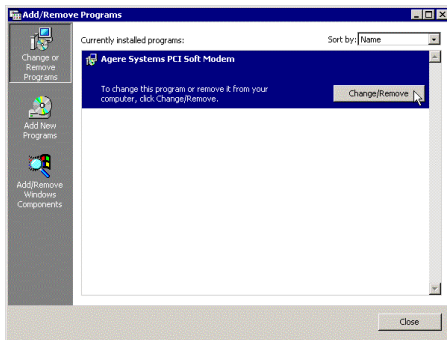
STEP 5. If there is no error message while the system is installing, your modem has been set up properly and functionally.

Section 2.3.8 Uninstall Modem from Windows 2000

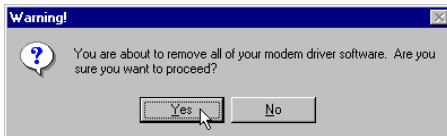
STEP 1. Open **Control Panel** window and choose **Add/Remove Programs** icon.



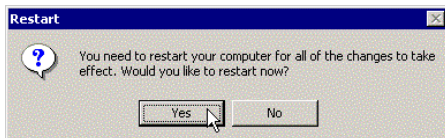
STEP 2. Select **Agere Systems PCI Soft Modem** device in **Change or Remove Programs** tab, then click on **Change/Remove**.



STEP 3. Click **Yes** to ensure to remove **Agere Systems PCI Soft Modem** device and its drivers.



STEP 4. Click **Yes** to restart your computer for all of the changes to take effect.



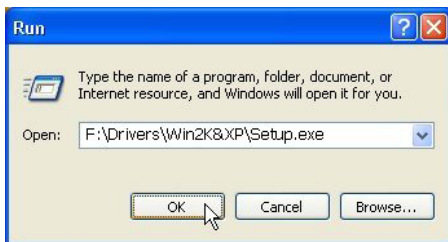
Section 2.3.9 Setup instructions for Windows XP

STEP 1. After you complete the modem hardware installation and turn on your PC, Windows system will automatically detect and install your new added devices. Windows system will prompt you with an Add New Hardware Wizard.



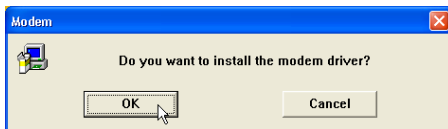
Click on **Cancel**.

STEP 2. Insert the **Modem Driver** CD-ROM disk attached with your modem into the CD-ROM drive device, Then run `<CD-ROM letter>:\Drivers\Win2K&XP\SETUP.EXE` to upgrade the modem driver as shown in figure.



Then click on **OK**.

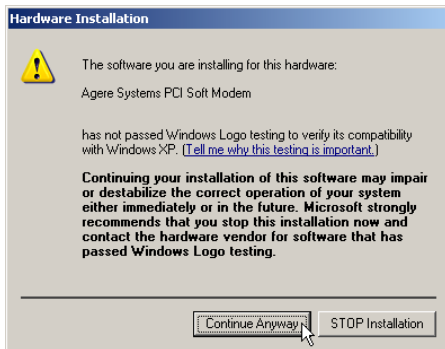
STEP 3. And then, a prompt screen will ask you to ensure to install the modem driver.



Then click **OK**.

The setup utility will copy the needed files into windows system.

STEP 4. The prompt screens will be warning you that the digital signature of programs have not found as shown in figure.

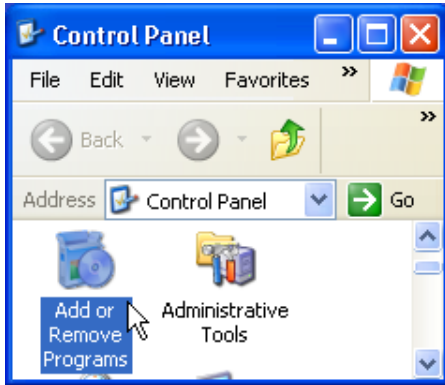


Please always click on **Yes**.

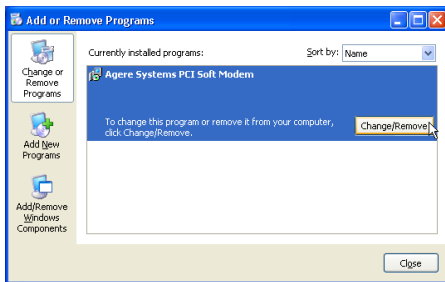
STEP 5. If there is no error message while the system is installing, your modem has been set up properly and functionally.

Section 2.3.10 Uninstall Modem from Windows XP

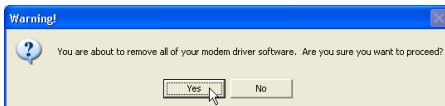
STEP 1. Open **Control Panel** window, then click on **Add or Remove Programs** icon.



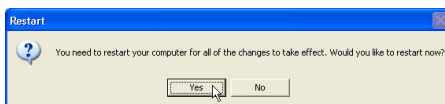
STEP 2. Choose **Agere Systems PCI Soft Modem** device in **Change or Remove Programs** tab, then click on **Change/Remove**.



STEP 3. Click **Yes** to ensure to remove **Agere Systems PCI Soft Modem** device and its drivers.



STEP 4. Click **Yes** to restart your computer for all of the changes to take effect.



Section 2.4 Testing Your Modem

Before you set up your software, start with a quick test to check that your modem is working. Once you have determined that your modem is setup properly, go on to **Section 2.5 Install Communication Software** to install your communications software. If you are having problems, see **Section 3 Troubleshooting**.

Click on **Start** and point to **Setting**. Then click on **Control Panel**. When the **Control Panel** window opens. Scroll down to the **Modem** icon and double click on it. Click on the **Diagnostics** tab and highlight the COM port for your modem. Then click on **More Info**, your computer will automatically communicate with your new modem using AT commands and receiving responses from your modem. A list of response means the modem is setup properly.

Section 2.5 Install Communication Software

You can install the communication software from the CD-ROM disc attached with your new modem. Please consult the software manual in the CD-ROM disc for the detail of software installation.

You do not have to use the communication software attached with your new modem. The modem was designed for and tested using a wide range of communications software packages. Many communication applications identify the modem automatically and configure themselves for the correct operating settings. Some of the communication applications will ask you to select the type of modem you are using. Select a **Generic Fax class 1 modem** will let you use basic communication and fax functions.

Section 3 Troubleshooting

Your modem is designed to provide reliable and trouble-free functionality, however, should you experience any difficulty, the information contained in this section will assist you in determining and resolving the source of the problem.

Problem: Modem does not respond to AT commands

Possible solutions:

1. Make sure the modem is not configured with a conflicting COM port and IRQ setting. Make sure the communication software is configured with the correct COM and IRQ settings (the same COM port and IRQ as the modem). Your communications software will not be able to send or receive any data if it is not configured to match the COM port and IRQ settings for the modem.

DOS based communication program is not working with this modem neither can you operate the modem in MS-DOS prompt screen.

2. Make sure the modem is properly initialized using the driver software. The software may improperly initialize your modem because you have selected an incorrect modem type. You may also be prompted to enter an initialization string by the software. Use AT&F as your initialization string.

Problem: Modem dials but does not connect

Possible solutions:

1. Be sure the IRQ setting is identical on the modem and the software.
2. Make sure that the phone line is working properly. A noisy line will prevent proper modem operation.

Problem: Modem makes a connection but no data appears on screen

Possible solutions:

1. Make sure all communication parameters (baud rate, data, stop, and parity bits) are properly configured and are identical on both sides. Be certain hardware flow control (RTS/CTS - default) is enabled in both the modem and the communication software.
2. Press the ENTER key several times. The remote system may be waiting to receive your data before it begins.
3. Make sure the correct terminal emulation mode is being used in the software (refer to software manual).

Problem: Modem displays errors while on-line with a remote modem

Possible solutions:

1. Make sure Call Waiting is turned off.
2. Make sure RTS/CTS hardware flow control is enabled (do not use XON/XOFF software flow control)

when transferring binary files).

3. Make sure the data speed is not faster than your computer capability. Operating too many applications at the same time may cause communication problem. Close unnecessary application in your system.

Problem: Modem exhibits poor voice recording or playback

Possible solutions:

1. Make sure the correct modem type is selected in the Voice/FAX software. Volume adjustment is available in control panel.
2. Make sure your computer is fast enough to handle voice operations (38.4 Kbps). Voice operations are CPU intensive and require a better CPU sharing when running under Windows.

Problem: No dial tone

Possible solutions:

1. Ensure that the telephone cord is securely connected at both modem and wall outlet.
2. Unplug the telephone cord from the computer and connect it directly to a telephone from the wall outlet. Check for a dial tone. If there is none, the problem is in the telephone cord or system. Call your telephone service provider.
3. Double-check your country setting. Different country setting will cause different modem performance. Please select the correct country as you located.
4. Check modem performance with a direct line from your telephone company. Some PBXs may cause the telephone line condition change and affect modem performance.

Problem: The modem does not answer incoming calls

Possible solutions:

1. Ensure that the automatic answer parameter is set to one of the enabled options, using the ATSO command (ATSO=1 to answer after one ring, and so on).
2. Ensure that no other devices, such as fax or answering machines, are answering calls before the modem does.

If you cannot resolve your situation after reading this section, contact your dealer or vendor for assistance.

Appendix 1 Modem Specifications

Modulation standards: V.92, V.90, V.34, V.32bis, V.32, V.29, V.27ter, V.22bis, V.23,V.22, V.21,V.17,
Bell212/103

Compression : V.44, V.42bis, MNP Class 5

Error Correction : V.42, MNP Class 2-4

Host Interface : PCI bus

FAX Group : Group III

FAX Command : EIA/TIA 578 class 1

Appendix 2 AT command set

Executing commands

Your modem is in Command Mode upon power-on and is ready to receive and execute AT commands. The modem remains in Command Mode until it makes a connection with a remote modem. Commands may be sent to the modem from an attached terminal or a PC running a communication program. This modem is designed to operate at common DTE speeds ranging from 115.2 Kbps to 300 bps. All commands and data must be issued to the modem using one of the valid DTE speeds.

AT commands and format

All commands must begin with the AT prefix, followed by the command letter and ended with the ENTER key. All default settings are printed in bold text. Spaces are allowed in the command string to increase command line readability but are ignored by the modem during command execution. All commands may be typed in either upper or lower case, but not mixed. A command issued without any parameters is considered as specifying the same command with a parameter of "0".

Example: ATL [ENTER]

This command causes your modem to lower its speaker volume.

AT Command Summary

AT	Command prefix
A/	Repeat last command
A	Answer
B0	Select V.22/V.21
B1	Select B212A/B103
B15	Select V.21 when the modem is at 300 BPS
B16	Select Bell 103J when the modem is at 300 BPS
D	Dial
0 - 9	Dialing digits
ABCD*#	Tone dial characters
L	Redial last number
P	Pulse dial
T	Tone dial
V	The modem switches to speakerphone mode and dials the number
R	The modem goes into answer mode directly after finish dialing
S=n	Dial stored telephone number n
W	Wait for dial tone

AT

Command prefix

,	Pause the time specified in S-register S8
!	Flash hook
@	Wait for quiet answer
^	Disable data calling tone transmission
\$	Bong tone detection
;	Return to command mode
E0	Disables echo
E1	Enables echo
H0	Hang up the telephone line
H1	Pick up the telephone line
I0	Reports modem identify string and driver version number
I1	Calculate ROM checksum and report it to DTE
I2	Verifies ROM checksum and report OK or ERROR
I3	Report modem identify string and driver version number
I4	Report firmware version for datapump
I5	Report the board/firmware ID, country ID and subsystem vendor ID
I9	Report country ID
I11	Report connection information
L0	Low speaker volume
L1	Low speaker volume
L2	Medium speaker volume
L3	High speaker volume
M0	Speaker always off
M1	Speaker on until carrier present
M2	Speaker always on
M3	Speaker off during dialing; speaker on until carrier present
N0	Handshake only at the communication standard specified by S37 and ATB command
N1	Begin the handshake at the communication standard specified by s37 and ATB, and fallback to lower speed may occur
O0	Return to data mode
O1	Retrain and return to data mode
O3	Rate re-negotiation and return to data mode
P	Select pulse dialing
Q0	Enables result code
Q1	Disables result code
Sn	Select S-register n; refer to S-register summary for the details

AT

Command prefix

Sn=x	Write x to S-register n; refer to S-register summary for the details
Sn?	Read from S-register n; refer to S-register summary for the details
T	Select tone dialing
V0	Choose numeric form result code
V1	Choose verbose form result code
W0	Reports DTE connect speed result code, disable protocol result codes
W1	Reports DTE connect speed result code, enable protocol result codes
W2	Reports DCE connect speed result code, enable protocol result codes
X0	Enables result code 0-4; disables dial tone and busy tone detection
X1	Enables result code 0-5,10 and above; disables dial tone and busy tone detection
X2	Enables result code 0-6, 10 and above; enables dial tone detection and disables busy tone detection
X3	Enables result code 0-5,7,10 and above; disables dial tone detection and enables busy tone detection
X4	Enables result code 0-7, 10 and above; enables dial tone and busy tone detection
Z	Reset modem and recalls user profile
&C0	Ignores carrier status; CD always ON
&C1	CD set according to carrier status
&D0	Ignores DTR
&D1	Modem switches from data mode to command mode when an ON-to-OFF transition of DTR occurs
&D2	When DTR switches OFF , the modem goes on-hook and disables auto-answer
&D3	Reset modem and recall user profile when DTR switches OFF
&F	Load factory defaults
&G0	Disables guard tone
&G1	Enables 550 Hz guard tone
&G2	Enables 1800 Hz guard tone
&K0	Disables flow control
&K3	Enables CTS/RTS hardware flow control
&K4	Enables XON/XOFF software flow control
&M0	Select asynchronous buffer mode
&P0	Select 10 pps pulse dial with 39%/61% make/break ratio
&P1	Select 10 pps pulse dial with 33%/67% make/break ratio
&P2	Select 20 pps pulse dial with 33%/67% make/break ratio
&Q0	Select asynchronous buffer mode
&Q5	Select Error control mode

V.92/V.44 PCI MODEM USER'S MANUAL

AT

Command prefix

&Q6	Same as &Q0
&Q8	Select MNP error control mode. If fail to connect, the modem will fallback according to current setting in S36
&Q9	Select V42 or MNP error control mode. If fails to establish, the modem will fallback according to current setting in S36
&S0	DSR always ON
&S1	DSR ON only during handshaking and when carrier is lost
&T0	Terminates test in progress
&T1	Initiates local analog loopback(LAL)
&T3	Initiates local digital loopback
&T6	Initiates remote digital loopback(RDL)
&V	View active profile, stored user profile and stored telephone number
&W	Stores active profile into user profile
&Zn=x	Stores telephone number x(up to 40 digits) to location n(0-3). <i>1301 V.90</i>
%B	View number in blacklist
%C0	Disables data compression
%C1	Enables data compression
%E0	Disables fallback and fall forward
%E1	Enables fallback, disables fall forward
%E2	Enables fallback and fall forward
-C0	Disables calling tone
-C1	Enables 1300 Hz calling tone
-V90=n	Control V.90 downstream speed
n = 0	V.90 disabled
n = 1	Auto rate
n = 2	28000 BPS
n = 3	29333 BPS
n = 4	30666 BPS
n = 5	32000 BPS
n = 6	33333 BPS
n = 7	34666 BPS
n = 8	36000 BPS
n = 9	37333 BPS
n = 10	38666 BPS
n = 11	40000 BPS
n = 12	41333 BPS
n = 13	42666 BPS

V.92/V.44 PCI MODEM USER'S MANUAL

AT

Command prefix

n = 14	44000 BPS
n = 15	45333 BPS
n = 16	46666 BPS
n = 17	48000 BPS
n = 18	49333 BPS
n = 19	50666 BPS
n = 20	52000 BPS
n = 21	53333 BPS
-V90?	Reports current V.90 setting
\A0	Set maximum MNP block size to 64 characters
\A1	Set maximum MNP block size to 128 characters
\A2	Set maximum MNP block size to 192 characters
\A3	Set maximum MNP block size to 256 characters
\Bn	Transmit break in n*100ms (n = 0-9)
\G0	Disables XON/XOFF flow control between local and remote modems
\G1	Enables XON/XOFF flow control between local and remote modems
\J0	Disables DTE speed adjust
\J1	Enables DTE speed adjust
\Kn	Set break control (n=0-5, default is 5).
\N0	Select normal mode
\N1	Select normal mode
\N2	Select MNP reliable mode
\N3	Select V.42 auto-reliable mode
\N4	Select V.42 reliable mode
\Q0	Disables flow control
\Q1	Enables XON/XOFF software flow control
\Q2	Enables CTS hardware flow control
\Q3	Enables CTS/RTS hardware flow control
\Tn	Set inactivity timer in minutes(n=0-255, default is 0)
\W0	Disables protocol result code appended to DCE speed
\W1	Enables protocol result code appended to DCE speed
\X0	Process XON/XOFF character as flow control character only
\X1	Process XON/XOFF character as flow control character and pass through to local DTE or remote modem

Notes:

The default setting of commands is in **bold Italic text** format.

V.92/V.44 PCI MODEM USER'S MANUAL

Appendix 3 S-Register Summary

Register	Function	Default	Range	Units
S0*	No. of rings to start auto-answer	0	0-255	ring
S1*	Ring count	0	0-255	ring
S2*	Escape character	43	0-255	ASCII
S3	Carriage return character	13	0-127	ASCII
S4	Line feed character	10	0-127	ASCII
S5	Backspace character	8	0-32,127	ASCII
S6*	Wait before dialing	2	2-65	second
S7*	Wait for carrier	50	1-255	second
S8*	Pause time for dial modifier ,	2	0-65	second
S10*	Lost carrier hang up delay	20	1-254	0.1second
S11*	DTMF dialing speed	95	50-150	msec
S12*	Escape guard time	50	0-255	20 msec
S14*	Bit-mapped register	-	0-255	-
	Bit 0,1,2	Reserved		
	Bit 3 = 0	V0 is selected		
	= 1	V1 is selected		
	Bit 4,5	Reserved		
	Bit 6 = 0	10 PPS pulse dialing(&P0, &P1)		
	= 1	20 PPS pulse dialing(&P2)		
	Bit 7	Reserved		
S21*	Bit-mapped register	-	0-255	-
	Bit0,1,2	Reserved		
	Bit 4-3 = 00	&D0 is selected		
	= 01	&D1 is selected		
	= 10	&D2 is selected		
	= 11	&D3 is selected		
	Bit 5 = 0	&C0 is selected		
	= 1	&C1 is selected		
	Bit 6,7	Reserved		
S22*	Bit-mapped register	-	0-255	-
	Bit 0,1,2,3	Reserved		
	Bit 6-4 = 000	X0 is selected		
	= 001	Reserved		
	= 010	Reserved		
	= 011	Reserved		
	= 100	X1 is selected		

V.92/V.44 PCI MODEM USER'S MANUAL

Register	Function	Default	Range	Units
	= 101	X2 is selected		
	= 110	X3 is selected		
	= 111	X4 is selected		
Bit 7	= 0	33/67 M/B ratio is selected(&P1, &P2)		
	= 1	39/61 M/B ratio is selected(&P0)		
S28*	Control V.34 modulation	1	0-1	-
	= 0	Disables V.34 modulation		
	= 1	Enables V.34 modulation		
S30*	Inactivity timer	0	0-255	minute
S32*	Synthetic ring volume	10	0-255	-
S33*	Synthetic ring frequency	0	0-5	-
S35*	Data calling tone	0	0-1	-
	= 0	Disables data calling		
	= 1	Enables data calling		
S37*	Maximum line speed attempted	0	0-19	-
	= 0	Auto rate		
	= 1	Reserved		
	= 2	1200/75 bps		
	= 3	300 BPS		
	= 4	Reserved		
	= 5	1200 BPS		
	= 6	2400 BPS		
	= 7	4800 BPS		
	= 8	7200 BPS		
	= 9	9600 BPS		
	= 10	12000 BPS		
	= 11	14400 BPS		
	= 12	16800 BPS		
	= 13	19200 BPS		
	= 14	21600 BPS		
	= 15	24000 BPS		
	= 16	26400 BPS		
	= 17	28800 BPS		
	= 18	31200 BPS		
	= 19	33600 BPS		
S38*	K56flex downstream rate	1	0-14	-
	= 0	Disables K56flex		

V.92/V.44 PCI MODEM USER'S MANUAL

Register	Function	Default	Range	Units
	= 1	Auto rate		
	= 2	32K BPS		
	= 3	34K BPS		
	= 4	36K BPS		
	= 5	38K BPS		
	= 6	40K BPS		
	= 7	42K BPS		
	= 8	44K BPS		
	= 9	46K BPS		
	= 10	48K BPS		
	= 11	50K BPS		
	= 12	52K BPS		
	= 13	54K BPS		
	= 14	56K BPS		
S48*	Error control feature	7	7,128	-
	= 7	Negotiation enabled		
	= 128	Negotiation disabled		
S89*	Sleep mode timer	10	0,5-65	second
S108 *	Network codec type	7	7,22,33	-
	= 7	Specified by central site mode		
	= 22	u-law		
	= 33	A-law		

Notes : The value of the S-registers marked with (*) were saved in NVRAM

Appendix 4 Result Codes Summary

<u>Verbose Code</u>	<u>Numeric Code</u>
OK	0
CONNECT	1
RING	2
NO CARRIER	3
ERROR	4
CONNECT 1200 EC*	5
NO DIAL TONE	6
BUSY	7
NO ANSWER	8
DELAYED	88
BLACKLISTED	89
BLACKLIST FULL	90
CONNECT 300 EC*	40
CONNECT 2400 EC*	10
CONNECT 4800 EC*	11
CONNECT 7200 EC*	24
CONNECT 9600 EC*	12
CONNECT 12000 EC*	25
CONNECT 14400 EC*	13
CONNECT 16800 EC*	86
CONNECT 19200 EC*	14
CONNECT 21600 EC*	55
CONNECT 24000 EC*	56
CONNECT 26400 EC*	57
CONNECT 28000 EC*	100
CONNECT 28800 EC*	58
CONNECT 29333 EC*	101
CONNECT 30666 EC*	102
CONNECT 31200 EC*	59
CONNECT 32000 EC*	70
CONNECT 33333 EC*	103
CONNECT 33600 EC*	60
CONNECT 34000 EC*	71
CONNECT 34666 EC*	104
CONNECT 36000 EC*	72
CONNECT 37333 EC*	105

Verbose Code	Numeric Code
CONNECT 38000 EC*	73
CONNECT 38400 EC*	28
CONNECT 38666 EC*	106
CONNECT 40000 EC*	74
CONNECT 41333 EC*	107
CONNECT 42000 EC*	75
CONNECT 42666 EC*	108
CONNECT 44000 EC*	76
CONNECT 45333 EC*	109
CONNECT 46000 EC*	77
CONNECT 46666 EC*	110
CONNECT 48000 EC*	78
CONNECT 49333 EC*	111
CONNECT 50000 EC*	79
CONNECT 50666 EC*	112
CONNECT 52000 EC*	80
CONNECT 53333 EC*	113
CONNECT 54000 EC*	81
CONNECT 54666 EC*	114
CONNECT 56000 EC*	82
CONNECT 57600 EC*	18
CONNECT 115200 EC*	87

Note:

* EC only appear when the extended result codes configuration option is enabled. EC is replaced by one of the following symbols, depending upon the error control method used:

V.42bis - V.42 error control and V.42bis data compression.

V.42 - V.42 error control only.

MNP5 - MNP class 4 error control and MNP class 5 data compression.

MNP4 - MNP class 4 error control only.

NoEC - No error control protocol.

Appendix 5 Government compliance notices

FCC compliance

This equipment complies with Part 68 of the FCC Rules. On this equipment is a label that contains, among other information, the FCC registration number and Ringer Equivalence Number (REN) for this equipment. You must, upon request, provide this information to your telephone company.

If your telephone equipment causes harm to the telephone network, the Telephone Company may discontinue your service temporarily. If possible, they will notify in advance. But, if advance notice isn't practical, you will be notified as soon as possible. You will be informed of your right to file a complaint with the FCC.

Your telephone company may make changes in its facilities, equipment, operations, or procedures that could affect proper operation of your equipment. If they do, you will be notified in advance to give you an opportunity to maintain uninterrupted telephone service.

The FCC prohibits this equipment to be connected to party lines or coin-telephone service.

In the event that this equipment should fail to operate properly, disconnect the equipment from the phone line to determine if it is causing the problem. If the problem is with the equipment, discontinue use and contact your dealer or vendor.

FCC Class B statement

This equipment has been tested and found to comply with the limits for a Class B digital device, pursuant to Part 15 of the FCC Rules. These limits are designed to provide reasonable protection against harmful interference in a residential installation. This equipment generates, uses and can radiate radio frequency energy, and if not installed and used in accordance with the instructions, may cause harmful interference to radio communications. However, there is no guarantee that interference will not occur in a particular installation. If this equipment does cause harmful interference to radio or television reception, which can be determined by turning the equipment off and on, the user is encouraged to try to correct the interference by one or more of the following measures:

- Reorient or relocate the receiving antenna.

- Increase the separation between the equipment and the receiver.

- Connect the equipment into an outlet on a circuit different from that to which the receiver is connected.

- Consult the dealer or an experienced radio/TV technician for help.

Notice: 1) Shielded cables, if any, must be used in order to comply with the emission limits.

2) Any change or modification not expressly approved by the Grantee of the equipment authorization could void the user's authority to operate the equipment.

DOC compliance information

NOTICE: The Canadian Department of Communications label identifies certified equipment. This certification means that the equipment meets certain telecommunications network protective, operational and safety requirements. The Department does not guarantee the equipment will operate to the user's satisfaction. Before installing this equipment, users ensure that it is permissible to be connected to the facilities of the local Telecommunications Company. The equipment must also be installed using an acceptable method of connection. The customer should be aware that compliance with the above conditions might not prevent degradation of service in some situations.

Repairs to certified equipment should be made by an authorized Canadian maintenance facility designated by the supplier. Any repairs or alterations made by the user to this equipment, or equipment malfunctions, may give the telecommunications company cause to request the user to disconnect the equipment.

Users should ensure for their own protection that the electrical ground connections of the power utility, telephone lines and internal metallic water pipe system, if present, are connected together. This precaution may be particularly important in rural areas.

CAUTION: Users should not attempt to make such connections themselves, but should contact the appropriate electric inspection authority, or electrician, as appropriate.

NOTICE: The Load Number (LN) assigned to each terminal device denotes the percentage of the total load to be connected to a telephone loop which is used by the device, to prevent overloading. The termination on a loop may consist of any combination of devices subject only to the requirement that the sum of the Load Numbers of all the devices does not exceed 100.

European CTR 21 compliance

The equipment has been approved in accordance with Council Decision 98/482/EC for pan-European single terminal connection to the public switched telephone network (PSTN). However, due to differences between the individual PSTNs provided in different countries, the approval does not, of itself, give an unconditional assurance of successful operation on every PSTN network termination point. In the event of problem, you should contact your equipment supplier in the first instance.

Note: The manufacturer should ensure that the vendor and user of the equipment is clearly informed of the above information by means of package and /or user manuals of the forms of user instructions.