



# Notices

## Catalina Users Guide

Software and documentation copyright © 2004 Voyetra Turtle Beach, Inc. All rights reserved. No part of this publication may be reproduced or transmitted by any means or in any form without prior written consent from Voyetra Turtle Beach, Inc. ("VTB").

In no event will VTB be liable for direct, indirect, special, exemplary, incidental, or consequential damages resulting from any defect or omission in this manual, even if advised of the possibility of such damages. In the interest of continued product development, VTB reserves the right to make improvements to this manual and the products it describes at any time, without notices or obligation.

Turtle Beach, the Turtle Beach Logo, Catalina, AudioSurgeon, MusicWrite, Recording Station, Record Producer and SoundCheck are trademarks of VTB. Voyetra is a registered trademark of VTB. Microsoft and Windows are registered trademarks of Microsoft Corporation. Dolby and Pro Logic are registered trademarks of Dolby Laboratories, Inc. Pentium is a registered trademark of Intel Corporation. All other trademarks are the properties of their respective companies and are hereby acknowledged.

Use of this software is subject to the terms and conditions of the End-User Software License Agreement.

**Catalina is a product of:**

Voyetra Turtle Beach, Inc. 5 Odell Plaza, Yonkers, NY 10701 USA

[www.OrpheusComputing.com](http://www.OrpheusComputing.com)-Custom Built Computers, Computer Hardware Parts and Upgrades, Consumer Electronics sales

## Technical support

**Catalina FAQ and Knowledge Base:** Go to the Turtle Beach web site ([www.turtlebeach.com](http://www.turtlebeach.com)) and click on "Support" then "Knowledge Base". Scroll down to the "C" section and click on "Catalina". This will bring up the list of articles.

The "FTP Files Download Area" in the Support section will contain the latest driver releases for Catalina available for download other support files.

**E-mail Tech Support:** [support@Turtlebeach.com](mailto:support@Turtlebeach.com)

Please include your name, product name, and Product ID.

**Fax Tech Support:** 914-966-1093

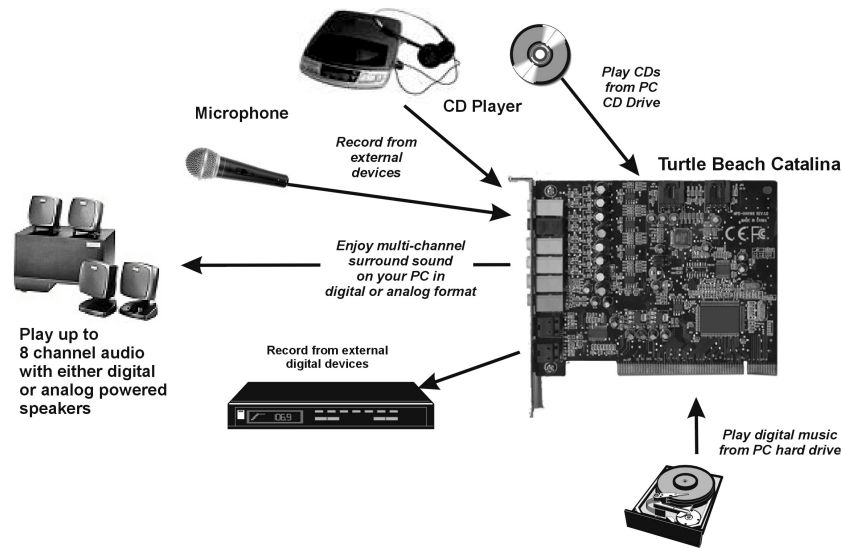
Fax a description of your problem to the above number, and please be sure to include your name, product name, and Product ID.

# Contents

INTRODUCING CATALINA .....	1
CATALINA CD .....	2
<b>Catalina Program Suite</b> .....	<b>2</b>
CATALINA CONNECTORS .....	5
<b>System Requirements</b> .....	<b>6</b>
INSTALLING THE CATALINA SOUND CARD .....	7
<b>Installing the Catalina</b> .....	<b>7</b>
<b>Installing the Analog CD-ROM Audio Cable</b> .....	<b>8</b>
<b>Installing the Drivers and Software</b> .....	<b>8</b>
<b>To uninstall Catalina</b> .....	<b>9</b>
<b>Testing Catalina with SoundCheck</b> .....	<b>9</b>
CONTROL PANEL TAB FUNCTIONS .....	10
HEADPHONE CONFIGURATION.....	12
TWO SPEAKER CONFIGURATION.....	13
FOUR SPEAKER CONFIGURATION.....	14
SIX SPEAKER (5.1 SURROUND) CONFIGURATION.....	15
EIGHT SPEAKER (7.1 SURROUND) CONFIGURATION.....	16
S/PDIF SURROUND-SOUND DIGITAL OUTPUT .....	17
HARDWARE WARRANTY .....	18
<b>FCC Declaration of Conformity</b> .....	<b>18</b>
EMC DECLARATION OF CONFORMITY.....	19



# INTRODUCING CATALINA



Catalina represents the latest generation in multi-channel PC audio and provides the following key features:

- DVD Playback with full 8-speaker surround sound.
- Surround sound available via digital audio connection to a home theater system or multiple analog audio outputs connected to a surround speaker system.
- Optical S/PDIF input and output for playback and recording of pure digital audio at resolutions of up to 24 bits 96KHz sampling rates. SPDIF output allows for pass-through of Dolby® Digital and DTS® multi-channel DVD sound to external A/V receivers and digital speaker systems. (NOTE: DTS Pass through is only available in Windows® 2000/XP)
- Selectable 2, 4, 6 or 8 analog line output channels with 18 bit resolution at up to 48 KHz sampling rate. (NOTE: channel 7/8 analog outputs are only available in Windows XP)
- Multi-channel format, for listening to MP3 digital music or movies with enhanced surround sound on 4, 6 or 8 speakers.
- Supports Game Surround Sound APIs such as EAX®, HRTF-based 3D positional audio, DirectSound® 3D and A3D®.
- Full-duplex codec for simultaneous record/playback.
- 32-bit PCI bus master for high-speed audio data transfers.
- Direct digital connections to the latest high-tech home entertainment equipment for the highest fidelity with lowest noise audio reproduction possible.

Whether you're playing PC games, watching DVD movies, using voice applications, listening to music or even recording your own, the Turtle Beach Catalina handles it all.

# CATALINA CD

The Catalina CD includes the following components:

<b>Catalina Drivers</b>	Audio drivers for Windows 98SE/Me/2000/XP.
<b>Catalina Control Panel Software</b>	A convenient utility for controlling the Catalina audio features.
<b>SoundCheck™</b>	Audio diagnostic utility that can help you test and troubleshoot Catalina audio features.
<b>Software Suite</b>	A versatile suite of music software, described in the next section.
<b>Adobe® Acrobat® Reader</b>	A limited version for use with the reference manuals.
<b>PDF Reference Manuals</b>	PDF versions of software reference manuals that can be viewed and printed with the Adobe Acrobat program included on the CD.

## CATALINA PROGRAM SUITE

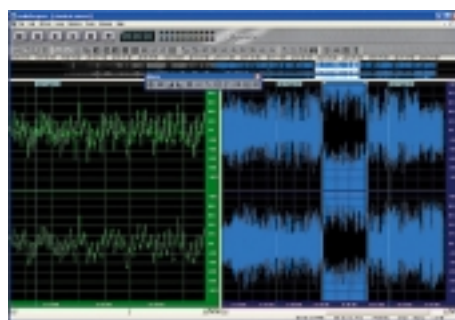
The Catalina CD includes a suite of versatile programs for controlling Catalina and working with digital audio, CD audio and MIDI music files:

### CATALINA™ CONTROL PANEL AND MIXER



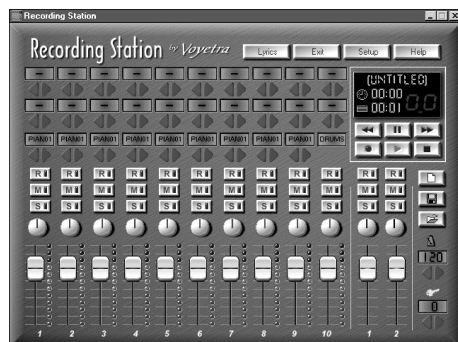
- Control Catalina speaker configurations.
- Set recording levels and source.
- Mix playback levels of sound sources.
- Control speaker settings.
- Control S/PDIF digital output settings.

### AUDIOSURGEON™ SPECIAL EDITION



- Turn your LPs, cassettes, Internet radio and CDs into digital audio files.
- Create voice-over and music backgrounds for multimedia presentations.
- Record and edit greeting messages for your answering machine.
- Master audio recordings for duplication on CD or cassette.

### RECORDING STATION™



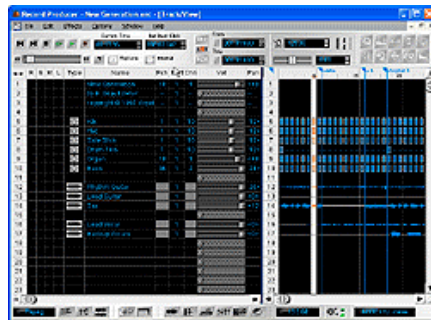
- An easy-to-use, MIDI and digital audio recording studio.
- Record up to 10 MIDI tracks with your MIDI keyboard to create songs with multiple MIDI instruments.
- Record 2 digital audio tracks to add vocals or acoustic instruments.
- Import MIDI files and create your own variations.

### MUSICWRITE™ LE



- Limited demo version of Voyetra's versatile music notation program.
- Record music from a MIDI keyboard and see notation appear on the PC screen.
- Edit music notation with your mouse.
- Video tutorial included.

### RECORD PRODUCER™ LE



- Limited demo version of Voyetra's powerful music composition program.
- Record, edit and play MIDI music from an external MIDI keyboard.
- Record and edit digital audio tracks along with MIDI tracks.
- Edit MIDI song data in piano roll and event list formats.

### SOUNDCHECK™



- Check and troubleshoot MIDI and digital audio features on Catalina.

### WINDVD

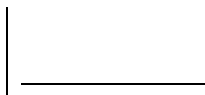


- The ultimate DVD software player, providing you with the finest quality video and audio playback.
- Watch movies with a theater experience right on your computer.

## SENSAURA

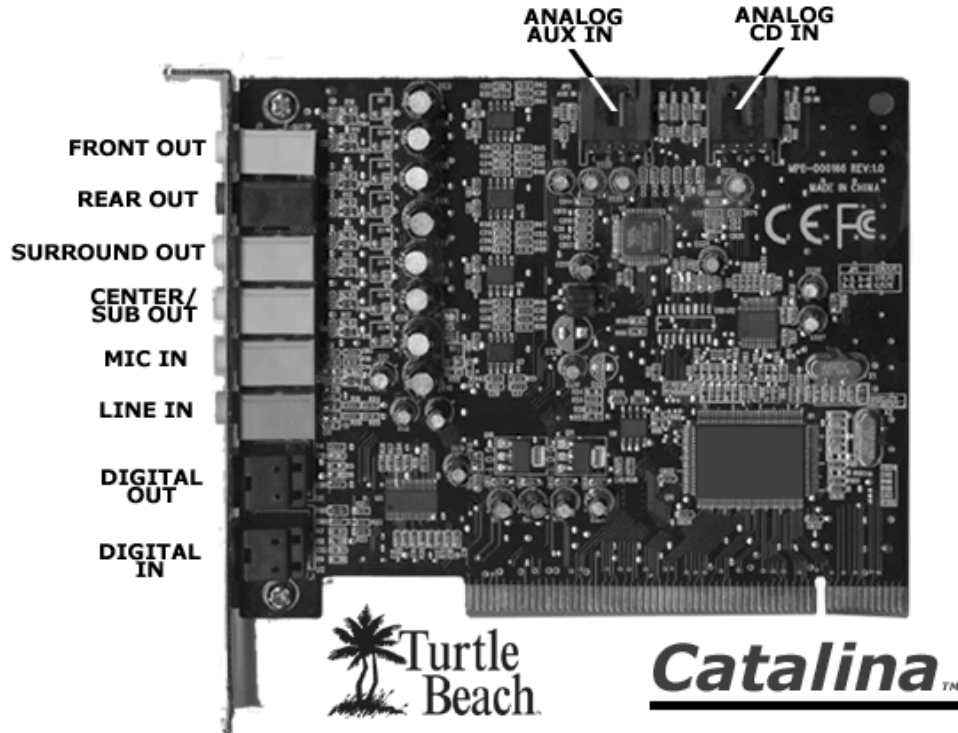


- Select between multiple HRTF configurations for the ultimate in 3D headphone virtualization.





# CATALINA CONNECTORS



Connector	Function
<b>Front Out (Channels 1 &amp; 2)</b>	<p>Front, Rear, Surround and Center/Sub outputs can drive headphones or powered speakers. Stereo, 4, 6 and 8 channel speaker settings are selected from the Catalina Control Panel.</p> <p>Use <b>Front Out</b> for stereo playback on powered speakers or headphones.</p> <p>Use <b>Rear Out</b> for rear channel powered speakers in 4, 5.1 and 7.1 channel analog playback modes.</p> <p>Use <b>Surround Out</b> for powered speakers placed directly behind the listener in 7.1 analog playback mode.</p> <p>Use <b>Center/Sub Out</b> for powered center and sub-woofer speakers when using 5.1 or 7.1 playback modes.</p>
<b>Rear Out (Channels 3 &amp; 4)</b>	
<b>Surround Out (Channels 5 &amp; 6)</b>	
<b>Center/Sub (Channels 7 &amp; 8)</b>	
<b>S/PDIF Digital In</b>	Optical S/PDIF input for recording digital audio from external sources at resolutions of up to 24 bits at 96 kHz sampling rate.
<b>S/PDIF Digital Out</b>	Optical S/PDIF output for playback of digital audio at resolutions of up to 24 bits at 96 kHz sampling rate. Allows for pass-through of Dolby® Digital and DTS® multi-channel DVD sound to external A/V receivers or digital speaker systems.
<b>Microphone Input (Monaural)</b>	<p>For condenser or dynamic microphones. Low-noise preamplifier provides wide range input sensitivity (10mV – 200mV).</p> <p>Mic gain is normally +20dB. To activate an additional 20dB boost (total of +40dB), access the <b>Record</b> tab of the Catalina mixer. Then select the <b>“Enhance Mic Recording Sensitivity”</b> option.</p>
<b>Line-In L/R</b>	For recording from external line-level sources, such as CD players, cassette players, etc..
<b>CD L/R In (Stereo)</b>	<p>For connecting analog audio from an internally mounted CD drive. Note that Windows XP utilizes digital audio transfer to the sound card from the PCI bus, so this connection is not required.</p> <p>Pin configuration:</p> <p>Pin 1 - Left (white)</p> <p>Pin 2 - Ground (black)</p> <p>Pin 3 - Ground (black)</p> <p>Pin 4 - Right (red)</p>

<b>Aux L/R In (Stereo)</b>	For internal analog audio from 2 <sup>nd</sup> CD or DVD. Pin configuration: Pin 1 - Left (white) Pin 2 - Ground (black) Pin 3 - Ground (black) Pin 4 - Right (red)
----------------------------	---

## SYSTEM REQUIREMENTS

<b>PC</b>	Pentium 450 MHz / compatible or higher with one available PCI expansion slot
<b>RAM</b>	128 MB system RAM
<b>Hard Drive</b>	Approximately 50 MB free space is required during the driver / application installation process. Additional space required for software applications installation.
<b>Display</b>	800x600 High Color (16-bit)
<b>Operating Systems</b>	Windows® 98SE, Millennium, Windows 2000 Professional, Windows XP
<b>CD-ROM Drive</b>	Quad-Speed CD-ROM or DVD-ROM drive required for software installation.  A DVD drive, a compatible software DVD player application, and a high quality 5.1 Surround speaker system (five powered speakers plus a powered subwoofer) are required for playing back Dolby® Digital (AC-3) audio from DVD movies with the Catalina.
<b>Speakers</b>	Catalina works with 2-speaker, 4-speaker, 5.1 and 7.1 speaker setups, or with headphones.  High quality sound system, powered speakers or headphones are recommended to properly hear the Catalina high-quality audio playback.

## INSTALLING THE CATALINA SOUND CARD

**If you're replacing a sound card that's already in your PC, or if your PC has a sound chip on the motherboard (i.e. if there are headphone and microphone jacks on the front or rear of your PC):**

Uninstall the drivers and associated software for the old sound card or sound chip on your motherboard before installing your Catalina sound card. This will help avoid any possible conflicts between the Catalina sound card drivers and the older drivers.

Generally, drivers can be removed in the **Add/Remove Programs** option, located in the Windows Control Panel. However, you should consult the PC or motherboard manufacturer's documentation for complete instructions, as the uninstall procedure may differ with each manufacturer.



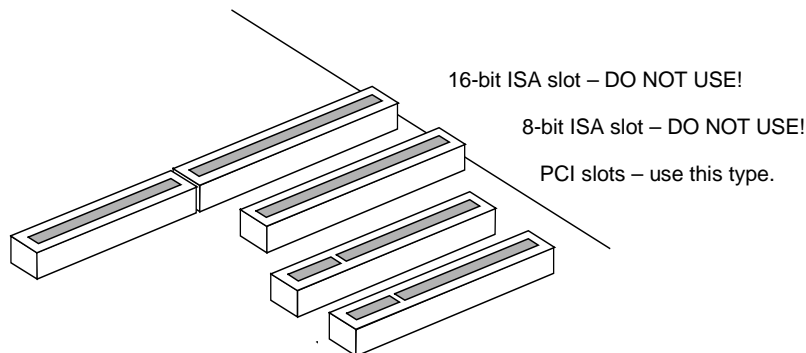
**IMPORTANT!** Read the warranty information included with your PC before you open its case to remove the old sound card and/or install the Catalina. Turtle Beach cannot be held responsible for loss of warranty coverage or other damages incurred as a result of modifications to the computer system by unauthorized personnel.

### INSTALLING THE CATALINA

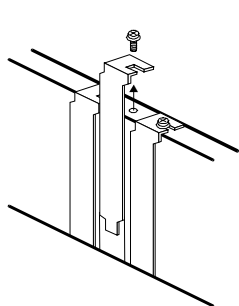
1. Turn off your PC, unplug its power cord and disconnect any external peripherals. Remove your PC's cover.
2. **If you're replacing a sound card that's already in your PC...** unscrew its bracket and gently rock the card out of its PCI slot to remove it from your PC.
3. Consult your motherboard documentation to locate the unshared PCI expansion slots. Select one that is empty for installing the card. We recommend using a free PCI expansion slot that's furthest away from the video card and power supply. Remove the metal slot rear cover by unscrewing its securing screw. Save the screw to secure the sound card to the chassis later.



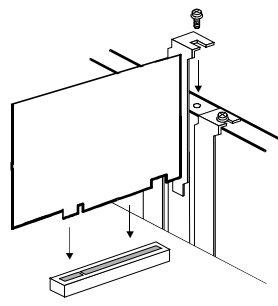
Motherboards with five or more PCI slots will have two or more slots that share the same IRQ (interrupt request line). Be sure to install the Catalina in a PCI slot that has its own, unshared IRQ. If you find that your computer locks up after you have installed the Catalina, reinstall the Catalina card to a different, unshared PCI slot.



4. Before removing the Catalina sound card from its protective bag, touch the PC chassis to discharge any static electricity build-up from your body. Hold the card by its edges to avoid touching the gold edge connectors or components
5. With a gentle back-and-forth rocking motion, press the gold-striped edge connector on the Catalina Beach sound card firmly into the PCI slot until it snaps in place. Secure its rear metal bracket to the chassis with the screw you removed in the previous step.



Remove the rear bracket



Gently install the sound card

6. Replace the PC's cover, reconnect the power cord and peripherals. Connect your powered speakers, microphone, and any other audio peripherals to the appropriate inputs and outputs on the sound card.

## INSTALLING THE ANALOG CD-ROM AUDIO CABLE



*In Windows XP, this analog signal connector is not needed, as the digital CD audio signal is sent directly through the PCI bus in digital format.*

Catalina has an internal connector for an audio cable to connect the analog stereo output of your CD-ROM drive. This cable should have been provided with your CD-ROM drive and is not included with Catalina. All CD-ROM drives that adhere to the MPC-2 (Multimedia PC) standard have an MPC-2 jack. Connect the MPC-2 connector to your CD-ROM drive's analog CD audio output. Then attach the connector to the CD Audio header on the Catalina. The CD audio cable should be plugged into the CD-ROM drive first; then the other end of the cable should be plugged into the appropriate connector on the Catalina sound card.

## INSTALLING THE DRIVERS AND SOFTWARE

After inserting Catalina into a free PCI slot, install the drivers and software as follows:



The Catalina CD will launch automatically only if the Auto-Insert Notification option is enabled for your CD-ROM drive. If the installation menu does not appear after inserting the CD into your CD ROM drive, browse to the drive letter that contains the CD, run 'SETUP.EXE', then return to the installation instructions.

1. Connect your powered speakers, microphone, and any other audio peripherals to the appropriate inputs and outputs on the Catalina.
2. Turn on the PC. After Windows has booted, if the "Add New Hardware Wizard" is displayed, click on the Cancel button to end this process.



It is important that you click on Cancel at this screen to properly install your sound card drivers.

3. Insert the Turtle Beach Installation CD into the CD ROM drive. If the installation menu does not appear within 30 seconds, click on the "My Computer" icon, , double-click on the CD-ROM drive icon to open it, and run 'SETUP.EXE'.
4. When the Catalina installation menu appears, select **Catalina Driver Setup**. Follow the instructions that appear during the install, selecting the options that best match your audio setup.



If the following dialog box appears, explaining that the software has not passed Windows Logo testing or does not have a Digital Signature, click "Continue Anyway" or "Yes" (depending on the operating system).



5. When prompted, reboot the system.



While preparing for reboot, the PC may appear to be temporarily "frozen". Do not interrupt the computer at this time. Wait a few minutes for the installation to complete. The wait time will vary depending on the speed of your PC. Please wait for the system to reboot to properly complete the installation.



During driver installation under Windows 98SE, the operating system will reboot. At this time, the system will again prompt for drivers. Browse to your Windows directory (usually C:\windows) and select the INF directory for the ENVY24HF.INF. Alternatively you may browse to the Windows 98 CD subfolder x:\Driver\Setup\Drivers\Win98se

## TO UNINSTALL CATALINA

If you should ever need to uninstall your Catalina sound card, follow these instructions:

1. Open the Windows Control Panel (Start → Settings → Control Panel).
2. Open the Add/Remove Programs applet (Add or Remove Programs in Win XP). Select Turtle Beach Catalina and click on the Add/Remove button (Change/Remove in Win XP) to the lower right of the screen.
3. Shut down your PC, remove the Riviera board, then reboot your PC.

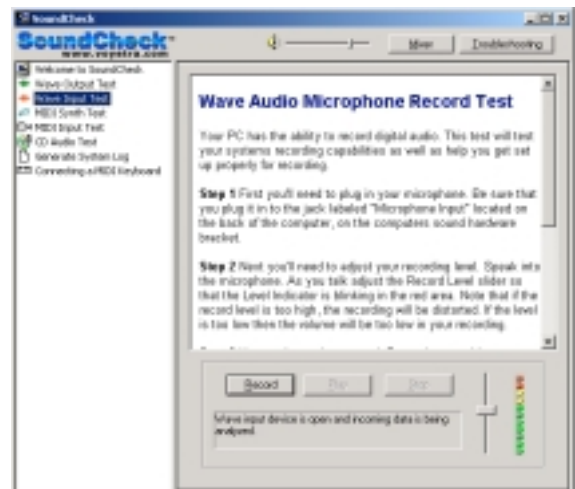


The Catalina drivers and software applications are installed separately. When removing the card, you should follow the same procedure as above to remove the applications also. Using the Uninstall link from the Turtle Beach Catalina program group will remove *only* the applications.

## TESTING CATALINA WITH SOUNDHECK

SoundCheck provides an easy way to test and troubleshoot the digital audio and MIDI features on Catalina. A series of displays takes you through the testing process step-by-step.

If, for some reason, one of the functions on Catalina is not working properly, SoundCheck provides troubleshooting tips to help you get it running again.



# CONTROL PANEL TAB FUNCTIONS

The Catalina Control Panel provides controls for using the advanced audio features. Once the software is installed from the Turtle Beach Installation CD, you can launch the control panel from the icon located on the right side of the Windows Start menu.

## SPEAKER CONFIGURATION

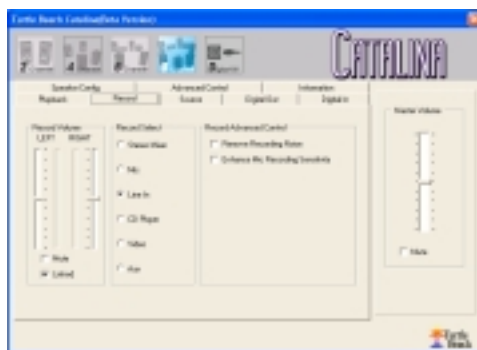


Select your speaker configuration from the line of icons at the top left of the control panel.

After selecting the speaker configuration (2, 4, 6, or 8 speakers), click the **Speaker Config** tab. From this screen, click on each individual speaker in the illustration to hear that speaker play a test sound.

You can set the master volume for all speakers with the slider on the right side of the control panel. Individual speaker volumes are controlled in the Playback Mixer panel, described below.

## RECORD



Click on the **Record** tab to activate the recording source and record level controls.

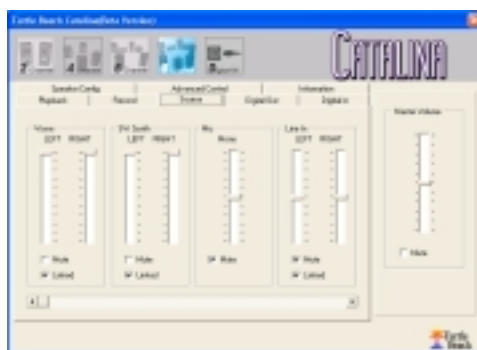
You can select which sound source to record by checking one of the sources listed in the **Record Select** list. Use the **Recording Volume** sliders to adjust the recording level of the selected source.

To record a mix of inputs, select **Stereo Mixer** and click on the **Source** tab to access the audio mixer (see below).

**Enhance Microphone Recording Sensitivity:** Boosts the level of the microphone input to compensate for low sensitivity microphones.

**Remove Recording Noise:** Eliminates low-level noise by removing DC offset on the input signal during recording for a cleaner sound.

## SOURCE



Click on the **Source** tab to activate the analog mixer. This can be used to monitor the analog inputs as well as record a mix of the inputs.

The following analog audio sources can be controlled by the volume sliders and mute buttons:

**Wave:** Digital audio signals, such as MP3 and WAV music file playback.

**SW Synth:** Software MIDI Music synthesizer

**Mic:** Mono microphone input on the rear panel jack. Note that the mic gain boost is accessed in the Record tab (see above).

**Line In:** Stereo line input on the rear panel jack.

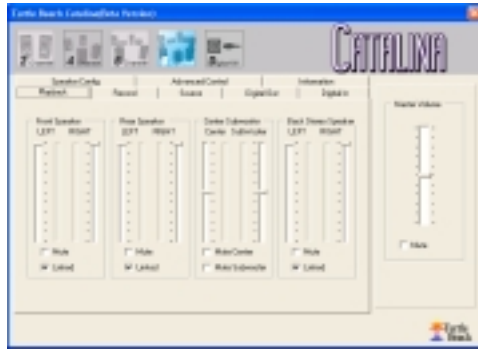
**CD In (not shown):** Use the scroll bar under the volume controls to see the CD Input controls, which set the level for the analog CD input (internal connector.)

**Aux In (not shown):** Use the scroll bar under the volume controls to see the Aux Input controls, which set the level for the analog Auxiliary input (internal connector.)

The mixer output can be routed to the record input by selecting **Stereo Mixer** in the **Record** tab.

In this case, you can mute the inputs for devices that you're not recording. For example, if you're using a microphone but wish to record the Line input only, you can mute the Mic input rather than unplug the microphone.

PLAYBACK



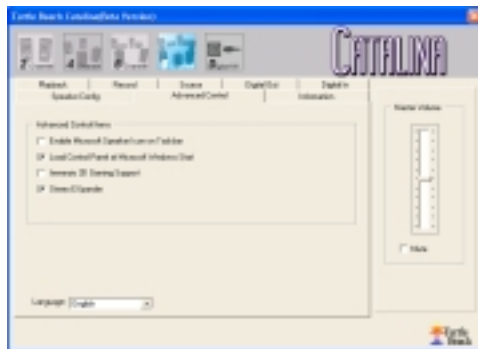
Click on the **Playback** tab to activate a group of sliders that control the volume of each speaker.

Note that by default, the "Linked" box is checked on each stereo pair, so that if you raise or lower the volume of your front speakers, for example, both the front left and front right speakers will increase in volume.

To adjust each speaker individually, deselect the "Linked" checkbox.

To mute individual speakers, check the box below the sliders.

ADVANCED CONTROL



Click on the Advanced Control tab to activate the advanced controls panel.

**Enable Microsoft Speaker Icon on Taskbar:** Activates a volume control icon in the Windows task bar for easily accessing the volume controls.

**Load Control Panel at Windows Start:** Will automatically load the control panel when Windows starts up, so that you do not need to launch it manually from the Programs menu.

**Immerzio 3D Gaming Support:** This option should be checked when playing games that use 3D positional audio. Immerzio 3D provides support for all of the supported 3D game positional algorithms.

**Stereo Expander:** Expands stereo content such as digital music, creating an impressive audio experience that uses all of your speakers rather than just the two front speakers.

DIGITAL OUT



Click on the **Digital Out** tab to activate controls for the S/PDIF digital output.

**Enable Digital Output:** Activates the digital audio output.

**AC3 or PCM with Audio Selection:** Allows either PCM or AC-3 (Dolby Digital) signals to be transmitted from the S/PDIF output.

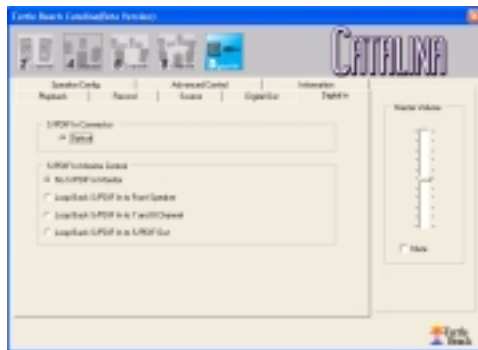
**AC3 only:** Will allow only AC-3 digital audio to be transmitted from the S/PDIF output.

**PCM only:** Will allow only PCM digital audio to be transmitted from the S/PDIF output.

**Loop back record in to S/PDIF out:** Routes the digital signal from the S/PDIF input to the S/PDIF output.

**Enable High-Sample Rate (96KHz):** Activates high speed digital audio mode. Note that this mode is only compatible with digital inputs that can accept 96KHz S/PDIF audio.

DIGITAL IN



Click on the **Digital In** tab to activate controls for the S/PDIF digital input.

**S/PDIF In Connector:** Activates the optical digital audio output.

**No S/PDIF in Monitor:** Silences the sound from the S/PDIF input from all of the analog outputs.

**Loop Back S/PDIF In to Front Speaker:** Sends the sound from the S/PDIF input to the front speakers. Note that when using a 96KHz SPDIF input signal, the S/PDIF signal can only be monitored using the output for channels 7 & 8.

**Loop Back S/PDIF In to 7 and 8 Channel:** Sends the sound from the S/PDIF input to the surround sound (ch 7 & 8) speakers. This feature will also operate when using a 96KHz S/PDIF input signal.

**Loop Back S/PDIF In to S/PDIF out:** Routes the digital signal from the S/PDIF input to the S/PDIF output.

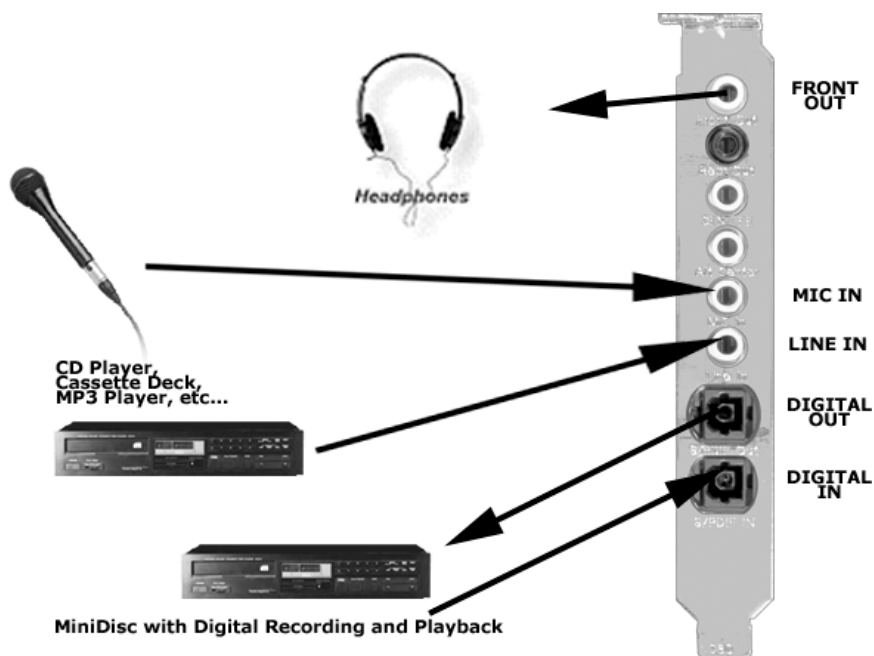
# HEADPHONE CONFIGURATION

To use headphones, click on the 2 Channel dialog from the main mixer and select the **Speakers** tab. From here, select the **headphones option**, which is useful for listening to stereo audio sources processed by **HRTF** (Head Related Transfer Function), which is 3D audio that simulates four speaker positional audio through two-speaker headphones.

**Note:** When playing games with 3D audio, the **Immerzio 3D Gaming Support** should be checked in the Advanced Control tab of the Control panel.



In this mode, the following jacks can be used on the Catalina bracket:



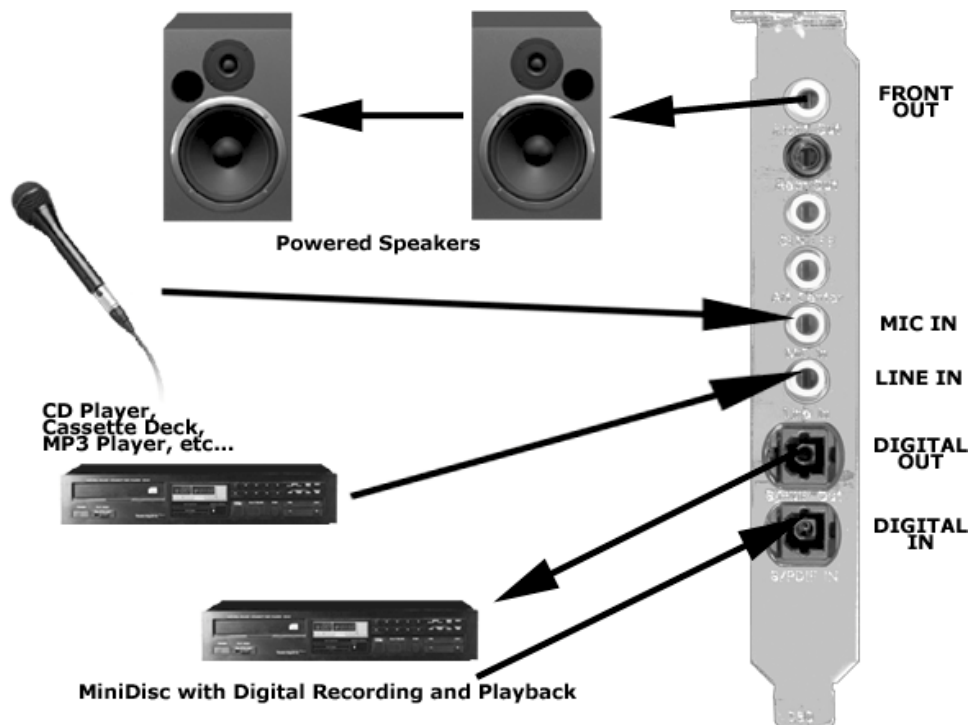
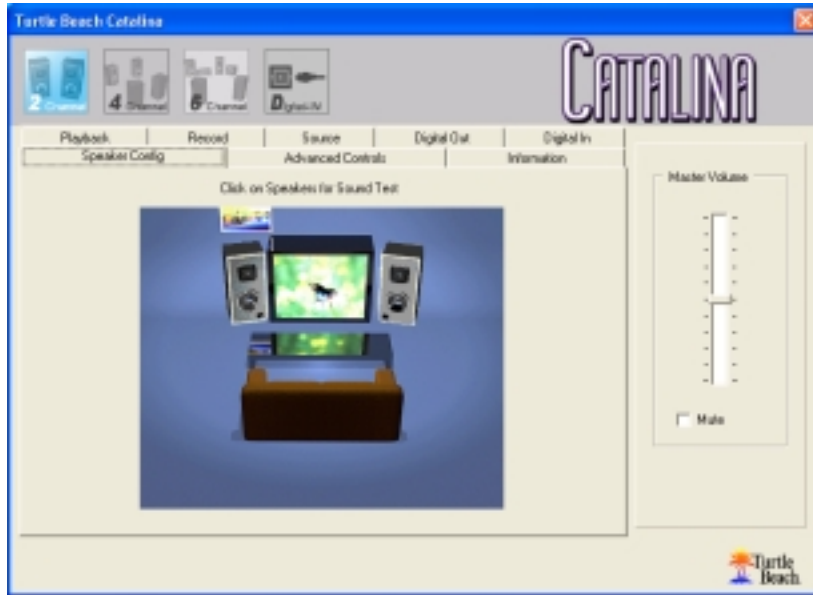


## TWO SPEAKER CONFIGURATION

To use stereo speakers, click the 2-Channel icon at the top of the **Control Panel**. To control the individual speaker volumes, click the **Playback** tab.

The mic and line inputs can be used to record from external sources using the Record tab. The digital S/PDIF inputs and outputs are also active in this mode.

**Note:** When playing games with 3D audio, the **Immerzio 3D Gaming Support** should be checked in the Advanced Control tab of the Control panel.

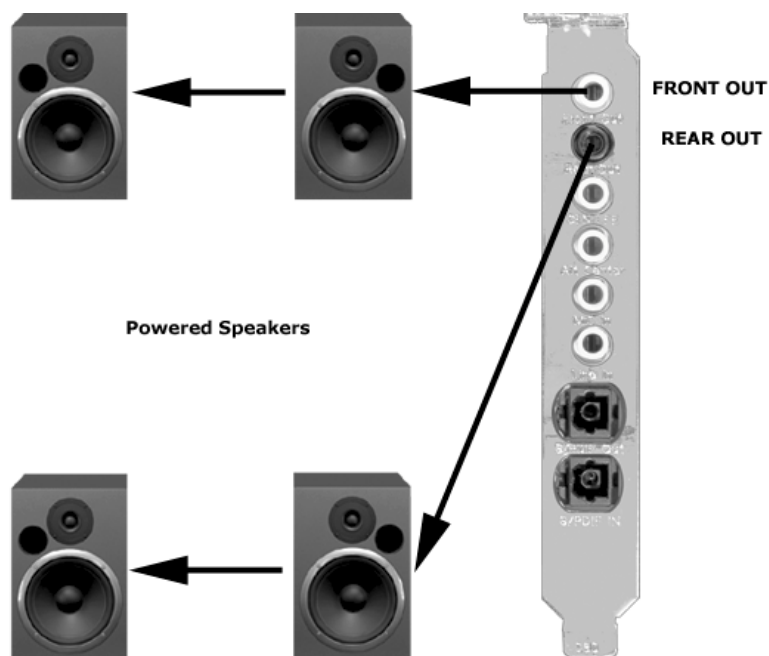


## FOUR SPEAKER CONFIGURATION

To use 4 speakers, select **4-Channel** from the icons at the top of the Control Panel. This mode is useful for listening to normal and enhanced Stereo, quad panning of stereo input signals and 4-channel audio for 3-D games. To control the individual speaker volumes, click the **Playback** tab.

The mic and line inputs can be used to record from external sources using the Record tab. The digital S/PDIF inputs and outputs are also active in this mode.

**Note:** When playing games with 3D audio, the **Immerzio 3D Gaming Support** should be checked in the Advanced Control tab of the Control panel.

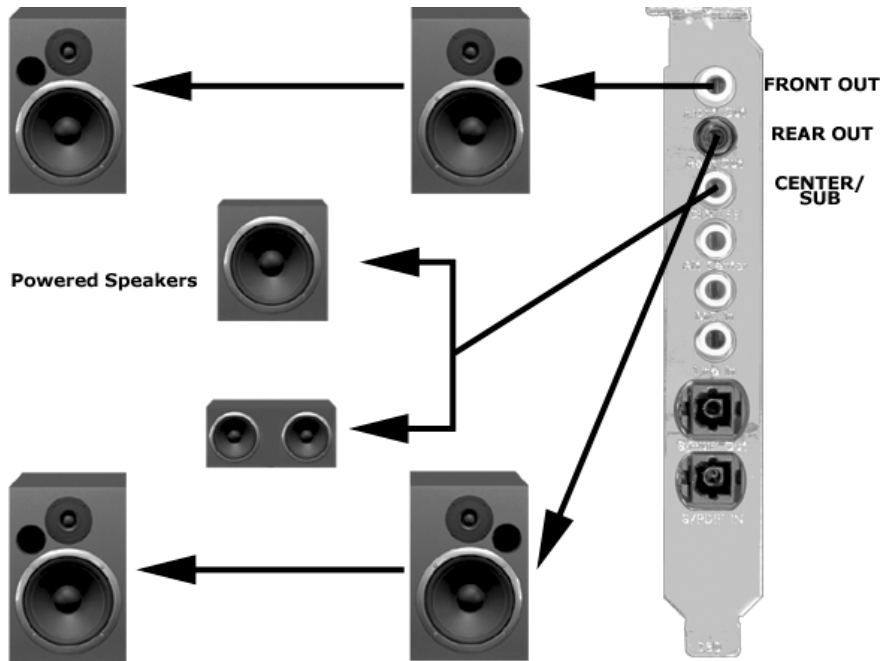


## SIX SPEAKER (5.1 SURROUND) CONFIGURATION

To use a 5.1 speaker configuration, with analog connections, select **6-Channel** from the icons at the top of the **Control Panel**. To control the individual speaker volumes, click the **Playback** tab.

The mic and line inputs can be used to record from external sources using the Record tab. The digital S/PDIF inputs and outputs are also active in this mode.

**Note:** When playing games with 3D audio, the **Immerzio 3D Gaming Support** should be checked in the Advanced Control tab of the Control panel.

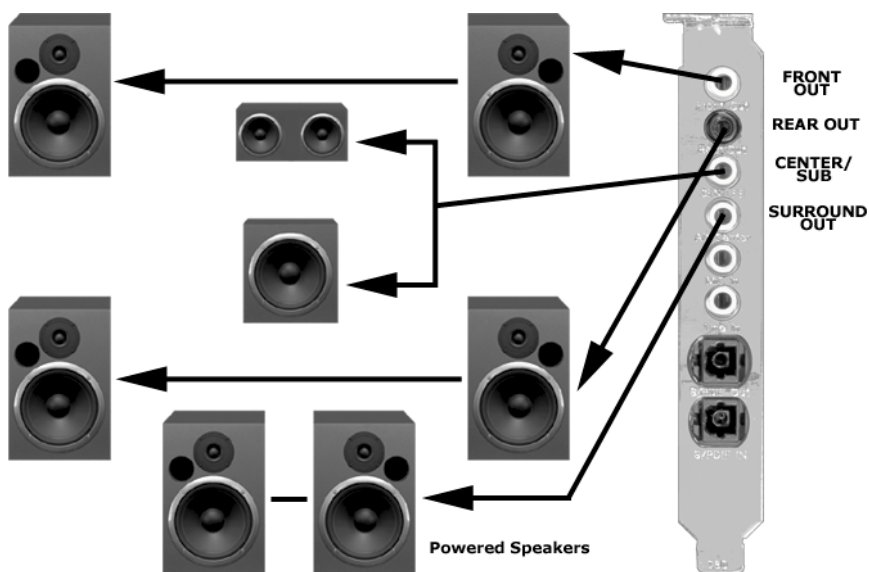


## EIGHT SPEAKER (7.1 SURROUND) CONFIGURATION

To use a 7.1 speaker configuration, with analog connections, select **8-Channel** from the icons at the top of the Control Panel. To control the individual speaker volumes, click the **Playback** tab.

The mic and line inputs can be used to record from external sources using the Record tab. The digital S/PDIF inputs and outputs are also active in this mode.

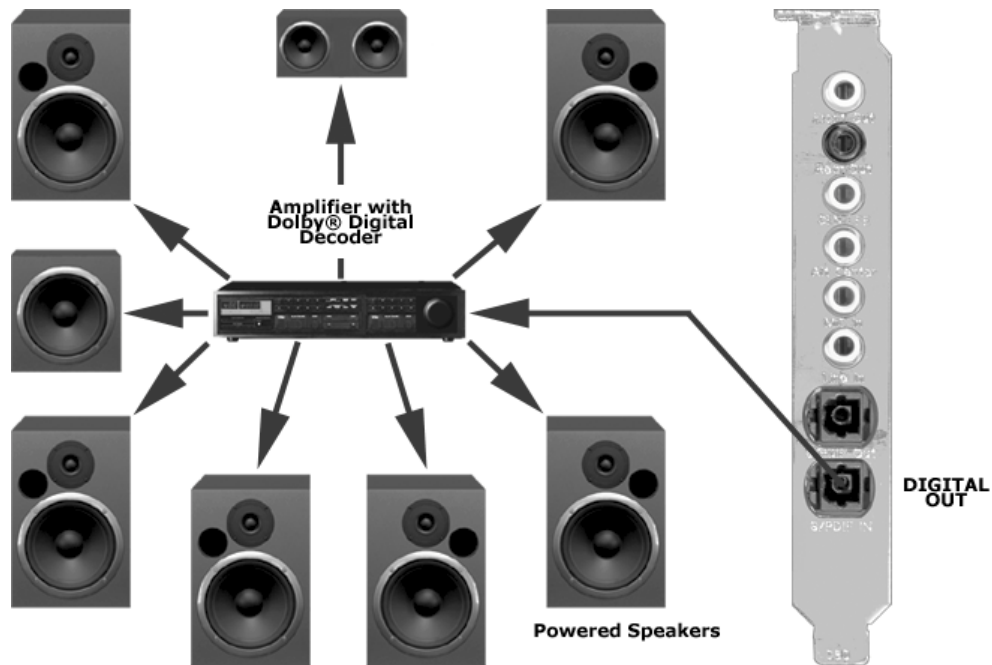
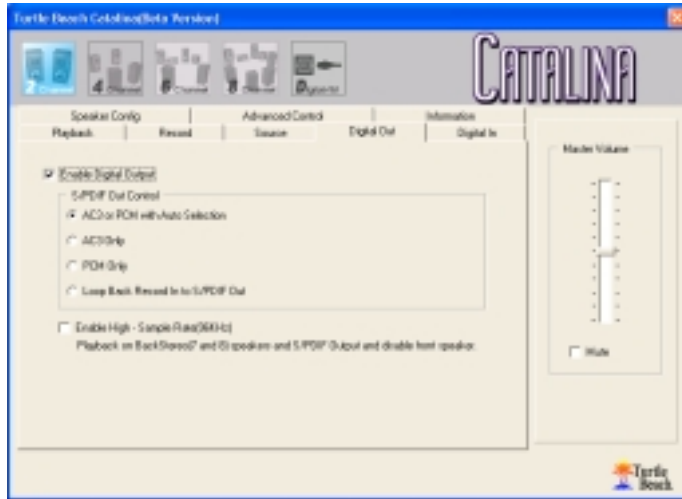
**Note:** When playing games with 3D audio, the **Immerzio 3D Gaming Support** should be checked in the Advanced Control tab of the Control panel.



## S/PDIF SURROUND-SOUND DIGITAL OUTPUT

To use a 5.1 / 7.1 digital speaker system or an A/V receiver with digital inputs, select the **Digital Out** tab from the control panel, and verify that **Enable Digital Output** is checked. See the Control Panel section for a description of the various options for S/PDIF out control.

This configuration is useful for listening to normal stereo, enhanced stereo (using effects), quad playback of stereo material, 4-channel audio for 3-D games, 4-channel audio with Virtual subwoofer and center channels and playback of decoded Digital Dolby 5.1 audio from DVDs. Note that DVD playback of Digital Dolby signals requires a software DVD decoder that is usually provided with the DVD playback software.



# HARDWARE WARRANTY

Voyetra Turtle Beach, Inc. ("VTB") warrants to the original end-user purchaser ("Purchaser") that the Turtle Beach Catalina ("Product") will be free of defects in materials and workmanship for a period of 90 Days (Ninety Days) from the date of purchase by Purchaser ("Warranty Period"). If a defect should occur during the Warranty Period, the Purchaser must obtain a Return Merchandise Authorization ("RMA") from VTB. Purchaser will be responsible for all costs incurred in returning the defective Product to and from an authorized VTB service center, or to the repair facility located at VTB's corporate headquarters. The Product must be returned in a static-proof bag, and in the original packaging. A copy of the dated proof of purchase must be included with the defective Product. The RMA number must be clearly indicated on the outside of the package. Packages without an RMA number will be returned to Sender. In the event of a defect, Purchaser's sole and exclusive remedy and VTB's sole liability are expressly limited to the correction of the defect by adjustment, repair, or replacement of the Product at VTB's sole option and expense. This warranty does not cover, and VTB is not responsible for, damage caused by misuse, neglect, fire, acts of God, or unauthorized modification of the Product or damage resulting from the use of the Product with hardware or software programs not provided or specifically recommended by VTB. Except as specifically provided herein, there are no other warranties expressed or implied, including, but not limited to, any implied warranties of merchantability or fitness for a particular purpose. In no event shall VTB be liable for indirect, incidental, consequential, or other damages including personal injury, lost profits and damages to property arising out of any breach of this warranty or otherwise. All software including operating systems or applications programs are provided on an "As Is" basis without warranty. Some states do not allow the exclusion or limitation of incidental or consequential damages, so the above exclusion or limitation may not apply to you. This warranty gives you specific legal rights. You may also have other rights, which vary from state to state.

## FCC DECLARATION OF CONFORMITY

<b>PRODUCT NAME</b>	Turtle Beach Catalina
<b>MODEL NUMBER</b>	TB400-3425-01
<b>FCC RULES</b>	TESTED TO COMPLY WITH FCC PART 15, CLASS B
<b>OPERATING ENVIRONMENT</b>	FOR HOME OR OFFICE USE
<b>FCC COMPLIANCE STATEMENT:</b>	This device complies with part 15 of the FCC rules. Operation is subject to the following conditions. (1) This device may not cause harmful interference and (2) This device must accept any interference received including interference that may cause undesired operation.
<b>CAUTION</b>	Changes or modifications to this unit not expressly approved by the party responsible for compliance could void the user's authority to operate the equipment.
<b>PARTY RESPONSIBLE FOR PRODUCT COMPLIANCE</b>	Voyetra Turtle Beach, Inc., 5 Odell Plaza, Yonkers, NY 10701 Tel: (914) 966-0600 Fax: (914) 966-1102

**INFORMATION TO USER:** This equipment has been tested and found to comply with the limits for a Class B digital device, pursuant to Part 15 of FCC rules. These limits are designed to provide reasonable protection against harmful interference in a residential installation. This equipment generates, uses, and can radiate radio frequency energy and, if not installed and used in accordance with the instructions, may cause harmful interference to radio communications. However, there is no guarantee that interference will not occur in a particular installation. If this equipment does cause harmful interference to radio or television reception, which can be determined by turning the equipment off and on, the user is encouraged to try to correct the interference by one or more of the following measures: (1.) Reorient or relocate the receiving antenna. (2.) Increase the separation between the equipment and receiver. (3.) Connect the equipment into an outlet on a circuit different from that to which the receiver is connected. (4.) Consult the dealer or an experienced radio TV technician for help

# EMC DECLARATION OF CONFORMITY

**Manufacturer's Name** Voyetra Turtle Beach, Inc.  
**Manufacturer's Address** 5 Odell Plaza, Yonkers, NY 10701

***Declares that this product***

---

**Product Name** Turtle Beach Catalina  
**Model Number** TB400-3430-01  
**Year of Manufacture** 2004

***Conforms to the following Product Specifications***

---

**EMC** EN55022: 1998+A1: 2000 CLASS B  
EN61000-3-2: 2000  
EN61000-3-3: 1995  
EN55024: 1998+A1:2001  
EN61000-4-2: 1995+A1:1998  
EN61000-4-3: 1996+A1:1998  
EN61000-4-4: 1995  
EN61000-4-5: 1995  
EN61000-4-6: 1996  
EN61000-4-8: 1993  
EN61000-4-11: 1994

**FCC** FCC PART 15 & PART 2; DOCKET 95-19  
CISPR 22 CLASS B

---